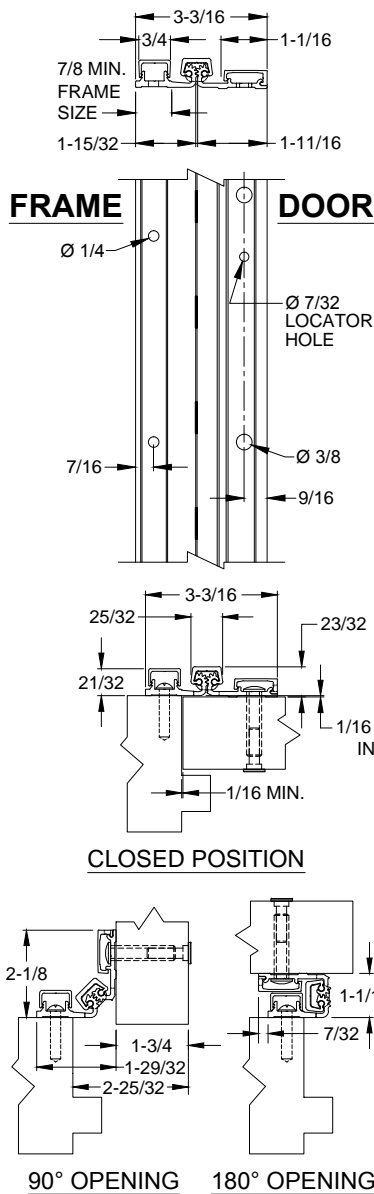


A570 - ALUMINUM GEARED HINGE, NARROW FRAME LEAF, 1/16 INSET, FULL SURFACE



	79"	83"	85"	95"	120"
HANDING REQUIRED	0	0	0	0	0
2-1/2	0	0	0	0	0
7-1/2	7-1/2	7-1/2	7-1/2	7-1/2	7-1/2
12-1/2	12-1/2	12-1/2	12-1/2	12-1/2	12-1/2
17-1/2	17-1/2	17-1/2	17-1/2	17-1/2	17-1/2
22-1/2	22-1/2	22-1/2	22-1/2	22-1/2	22-1/2
27-1/2	27-1/2	27-1/2	27-1/2	27-1/2	27-1/2
37-1/2	37-1/2	37-1/2	37-1/2	37-1/2	37-1/2
45-1/2	45-1/2	45-1/2	47-1/2	47-1/2	47-1/2
55-1/2	55-1/2	55-1/2	57-1/2	57-1/2	57-1/2
60-1/2	60-1/2	60-1/2			62-1/2
65-1/2	65-1/2	65-1/2			
70-1/2	70-1/2	70-1/2	72-1/2	72-1/2	72-1/2
75-1/2	75-1/2	75-1/2	77-1/2	77-1/2	
79	79	80-1/2	82-1/2	82-1/2	82-1/2
		83	85	87-1/2	
				92-1/2	92-1/2
				95	95
					97-1/2
					102-1/2
					107-1/2
					112-1/2
					117-1/2
					120

NOTES:

1. HINGES CUT TO CUSTOM LENGTH ARE CUT FROM THE BOTTOM. PLEASE SPECIFY HANDING.
2. ALL DIMENSIONS ARE IN INCHES.
3. ALL DIMENSIONS ARE TO CENTERLINE OF HOLES.
4. XX" DENOTES LOCATOR HOLE.



STANDARD HINGE SIZES & SCREW DETAIL

NOMINAL DOOR HEIGHT	6'8"	7'0"	7'2"	8'0"	10'0"
ACTUAL HINGE LENGTH	79"	83"	85"	95"	120"
FRAME	12-24 x 7/8" PHILLIPS PAN HEAD, SELF DRILLING, THREAD FORMING TEK MACHINE SCREW	13	14	13	15
DOOR	1/4-20 x 1-11/16" x 3/8 DIA. SEX BOLT & 1/4-20 x 1-1/8" PH. HEAD SHOULDER SCREW	9	10	9	11
	12-24 x 7/8" PH. PN. HD. SELF DRILLING TEK SCREW (LOCATOR HOLE)	3	4	3	4

A570-ALUMINUM GEARED HINGE-01.DWG



www.abhmfg.com
E-mail: abhinfo@abhmfg.com
Architectural Builders Hardware Mfg., Inc.
1222 Ardmore Ave., Itasca, IL 60143
630.875.9900; FAX 800.9FAXABH (932.9224)

A570
ALUMINUM GEARED HINGE

©2017 ABH Mfg., Inc.
printed in USA

PAGE 1 OF 1
ISSUED 03-24-17